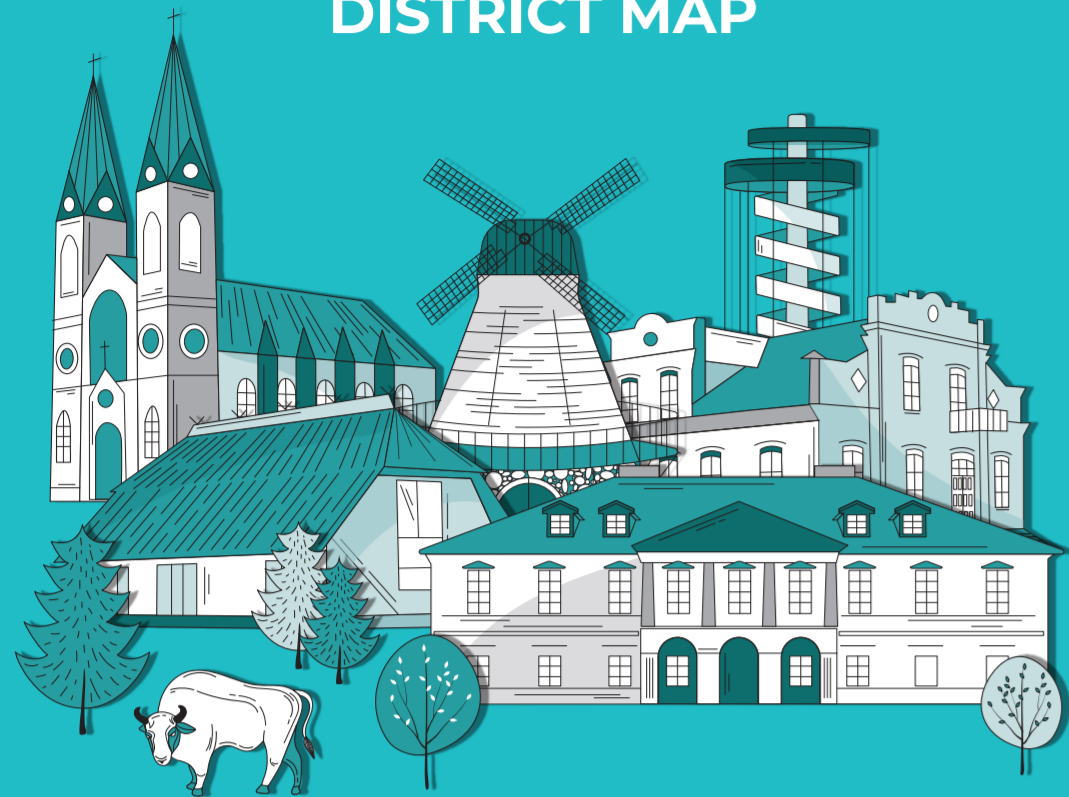


# PANEVĖŽYS DISTRICT MAP



## UNIQUE ATTRACTIONS

### 1. BISON PADDOCK OF PAŠILIAI

Girelė homestead, Ramygala sub-municipal area +370 615 17 701

Do you know the weight of the largest animal in Europe? Find the answer at the Pašiliai Bison Enclosure, home to the European bison listed in the International Red Book. Their revival in Lithuania began here in 1969. Watch these majestic mammals from the viewing platform and take a walk along the 600-metre educational trail, where you'll learn about the wildlife of the Pašiliai Forest.

### 2. EXHIBITION OF KREKENAVA REGIONAL PARK VISITOR CENTRE

Dobrovolė II, Krekenava sub-municipal area +370 604 97 164

The regional park covering the outskirts of Krekenava town is best visited after a stop at the visitor centre. The reason is simple – nature is best experienced through your senses, and the interactive exhibition here will stimulate them all. Discover the unique natural and cultural heritage of the regional park through sight, smell, hearing, and touch. After such an experience, you'll be even more eager to see the park's attractions and recreational spots in person.

### 3. KREKENAVA REGIONAL PARK OBSERVATION TOWER

Dobrovolė II, Krekenava sub-municipal area

All visitors entering Krekenava are greeted by the majestic towers of its church. However, these are far from the only towers in the town. The visitor centre in the regional park boasts a 30-metre tower with an observation deck. From this vantage point, you can enjoy a stunning panorama of the meandering Nevėžis River and the valley adorned with oxbow lakes – a true depiction of beautiful Lithuanian nature.

### 4. OLD MILL IN RAMYGALA

Dariaus ir Girėno g. 46B, Ramygala +370 699 81 131

Time has no bearing on the old Ramygala Mill. Although it was built back in 1929, its authentic equipment still operates successfully, grinding grain to this day. Educational programmes entitled "The Transformation of Grain" introduce visitors to grain processing technologies and various types of cereals. The experience doesn't end with observation, you'll be treated to bread baked in a wood-fired oven or delicious pastries made from flour milled on-site.

### 5. PORCELAIN GALLERY

Stanioniai, Pajstris sub-municipal area +370 687 49 495

Imagine this: a single vase costing more than a horse and four men of a dragoon regiment! This is just one of the many fascinating facts you'll discover at the impressive Porcelain Gallery. The gallery houses over a thousand porcelain works from Western Europe, China, Japan, and other countries, created from the 18th century to the

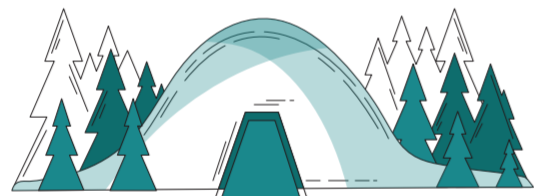
present day. The numbers are astounding, but even more impressive is the beauty revealed in the Imari, Baroque, Modernism, Postmodernism, and other styles of hand-painted and gilded porcelain masterpieces.

### 6. "IDĖJŲ PARKAS BUNKERIS"

Vabalninko g. 73, Likpetriai, Karsakiškis sub-municipal area +370 616 90 666

How to combine nature relaxation with horror attractions? Visit the former secret military communications bunker, home to one of Lithuania's largest horror rooms. After an intense experience in the bunker, you can walk through a 14-hectare forest area featuring interactive metal animal sculptures, children's play and picnic areas, and the relaxing atmosphere of the Aukštaitija forest.

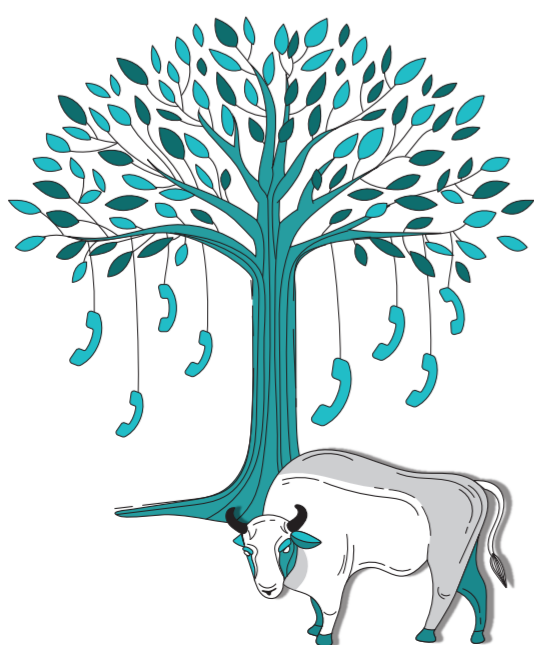
Visits require prior booking.



### 7. TELEPHONE TREE

Smiltynės vs., Panevėžys sub-municipal area

In the Panevėžys district, there is a wild pear tree adorned with telephones. Yes, you read that correctly – hanging from its branches and trunk is a collection of telephones, including both landlines and smartphones. This place feels like an open-air museum where nature and innovation, history, and the present converge.



## HISTORICAL TRAILS (MUSEUMS, MANORS, MEMORIAL ESTATES)

### 8. BISTRAMPOLIS MANOR

Bistrampolio g. 1, Kučiai, Ramygala sub-municipal area +370 685 78 348

For those seeking a balance between education and relaxation, we invite you to step into the life of the 19th-century Bistrampolis Manor. The restored manor retains its coach house, stables, a gardener's house, a rotunda, and a chapel, which now houses the Book Smugglers Museum. This museum preserves the secrets of printing and features a fresco painted by the world-renowned artist and professor Antanas Kmieliuskas, inspired by the book smuggling movement. In addition to educational activities and tours, the manor offers quality relaxation ideas – it has a hotel, restaurant, spa, stables, and a petting zoo for young visitors.

### 9. NAUDVARIS MANOR ESTATE

Dvaro g. 9, Naudvaris, Naujamiestis sub-municipal area

An exceptional location whose origins are shrouded in mystery. It is known only that the estate existed as early as the 18th century. It was owned by notable figures, including the engineer Stanislovas Kerbedis, who was born here and is known for designing bridges and hydraulic structures. In 1940, the manor was nationalised, becoming the centre of a collective farm, with an office and a primary school established on the premises. By the mid-19th century, a new ensemble of eight buildings was created at the manor, adhering to classical and romantic styles, which you can see for yourself.

### 10. ĮSTRA AIRCRAFT MUSEUM

Stanioniai, Pajstris sub-municipal area +370 618 39 936

Discover the paths paved by aviators! In 2000, aviator Vytautas Lapėnas established an aerobatic flying school in Stanioniai, which now hosts a museum revealing the behind-the-scenes of aviation. The indoor and outdoor exhibits feature collections of black boxes, radio receivers and transmitters, wooden propellers from the early 20th century, and aviation officers' daggers from various countries. Guides will share stories about famous pilots and the equipment used during World War I and World War II. You can also book a scenic flight or participate in educational programmes.

### 11. FLAX MUSEUM

Eriškių g. 17A, Stultiškiai, Upytė sub-municipal area +370 653 10 047

The three-story Stultiškiai Mill is a 19th-century structure that looks like it came straight out of a fairy tale. Interestingly, its millstones were once attached to the trunk of a mighty pine tree, which was later cut down. While the mill no longer grinds flour, its history lives on. It now houses the Flax Museum, where in its updated and interactive exhibitions you can learn about the journey of flax from stem to fabric, and see all the tools and machinery needed for its processing.

### 12. MUSEUM OF JUOZAS TUMAS-VAIŽGANTAS AND THE LITHUANIAN BOOK-SMUGGLERS

Ustronės 1A, Krekenava sub-municipal area +370 698 71 162

The only book smuggling museum in Lithuania is a unique place for those interested in literature and history. The barn at Ustronė Homestead hosted gatherings of the Garšviai book smuggling community. Banned Lithuanian publications were carefully hidden between the oak floors and ceiling. Additionally, the activities and pastoral work of the writer Juozas Tumas-Vaižgantas are associated with book smuggling. He helped sort and hide the publications and collected donations for printing Lithuanian literature. The museum now hosts events and educational sessions.

Visits require prior booking.

### 13. PUZINIŠKIS MUSEUM (GABRIELĖ PETKEVIČAITĖ-BITĖ'S BIRTHPLACE)

Puziniškis 4, Smilgiai sub-municipal area +370 614 62 010

Puziniškis can be called the cultural centre of Northern Lithuania in the late 19th and early 20th centuries. It was a hub for fostering Lithuanian identity, the national movement, and book smuggling. The Puziniškis Manor, the birthplace of the notable public figure, teacher, writer, and philanthropist Gabrielė Petkevičaitė-Bitė, was designed by her brother Jonas. An English-style, red-brick, two-story building with a veranda nestled among lilac blossoms allows visitors to easily imagine the intellectual gatherings that once took place here. Inside, a memorial exhibition provides insights into significant national moments. The museum guides, educational programmes, and cultural events,

including the Gabrielė Petkevičaitė-Bitė Literary Award ceremonies, will introduce you to the behind-the-scenes stories of this historic site.

Visits require prior booking.

### 14. JUOZAS ZIKARAS MEMORIAL HOMESTEAD

Paliukai 8A, Pajstris sub-municipal area +370 615 90 967

If you have visited Kaunas and seen the Statue of Liberty, you are already familiar with the work of Juozas Zikaras, one of the most renowned Lithuanian sculptors of the first half of the 20th century. His works can be seen in various cities across Lithuania, but to learn more about his biography and creative process, visit his memorial homestead. Here you will learn about the artist's childhood, how his realistic artistic language, which has become a symbol of independent Lithuania, was formed, where his tireless patriotism poured from, as well as photographs of his most famous works and exceptional moments from his life.

Visits require prior booking.

### 15. ETHNOGRAPHIC FARMSTEAD IN SMILGIAI

Panevėžio g. 21, Smilgiai +370 614 07 983

What kind of work was going on behind the walls of the Aukštaitian gryčia (an old and small house) Discover an ethnographic 19th-century farmhouse made up of 6 authentic buildings: a living house, a smithy, a barn, a stable, a sauna, and a chapel post, some of which were relocated from various parts of the Panevėžys region. Immerse yourself in the life of the farmers, familiarise yourself with agricultural tools and blacksmithing crafts, and participate in educational programmes and events.

Visits require prior booking.

### 16. JUOZAS URBŠYS HOMESTEAD

Čiūrų g. 21, Čiūrai, Krekenava sub-municipal area +370 4 550 2039

Imagine how the Lithuanian Minister of Foreign Affairs worked during the interwar period. The last person to hold this position during that time was Juozas Urbšys. His homestead features an abundant collection of documents and photographs revealing the intricate history of diplomacy and the complex aspects of his life as a public figure. The site actively hosts scientific, cultural, and artistic activities.

Visits require prior booking.

### 17. CINEMA MUSEUM

Nevežio g. 21, Raguva +370 625 24 564

Discover the history of the film industry in the Panevėžys region. The sources and evidence were gathered by cinema mechanic Marytė Verbičienė, who transported cinema equipment and films on her motorcycle to cultural centres and offices in Raguva, where up to 150 spectators would gather! All posters, records, and tapes collected and preserved throughout Marytė's career, along with actor photos, published articles, and other industry-related attributes, are now open to all cinema enthusiasts.

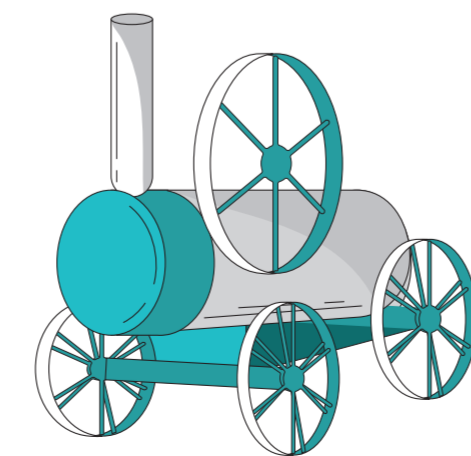
Visits require prior booking.

### 18. KLEMENTAS SAKALAUSKAS HOMESTEAD-MUSEUM

Saulėtekio g. 7, Piniava +370 687 20 468

What motivates people to become interested in collecting? In Klementas Sakalauskas' case, it was an ancient coin dug up by his father during his early childhood. After that pivotal moment, his passion for antiques only grew, and gradually, various items from the 18th to 19th centuries found their way into his collection. It includes not only household artefacts but also a 1931 NASH car imported from the United States, the world's first sound recorder – Edison's phonograph – and even a 70–80-million-year-old dinosaur egg, verified by the Latvian Geological Museum.

Visits require prior booking.



## CRAFTS

### 19. UPYTĖ TRADITIONAL CRAFTS CENTRE

Eriškių g. 16B, Upytė +370 626 57 415

What makes Upytė famous? A traditional craft centre built in the manor according to the Aukštaitianian (Lithuanian highland's) model, decorated with eco-friendly rye straw! Discover the exhibitions of craftsmen and folk artisans, along with a diverse selection of educational programmes that will leave a lasting impression. The centre boasts a spinning wheel, weaving and knitting looms, and two ceramic kilns, allowing you to step into the shoes of various craftspeople and hone your artistic skills.

Visits require prior booking.

### 20. "SAVOS ERDVĖS" CRAFT RESIDENCY

Dariaus ir Girėno g. 37, Ramygala +370 600 52 957

When creativity beckons, visit the craft residency in the historic centre of Ramygala – an attraction for enthusiasts of creative and educational activities, and lovers of ceramic art. There are plenty of opportunities to unlock your artistic potential: creative symposia, informal education sessions, top-notch ceramics equipment, and hands-on experiences in beeswax, textiles, silk

painting, wool felting, and other educational programmes.

Visits require prior booking.

### 21. RADVILIŠKIS VILLAGE BAKERY AND BREAD ROAD SCULPTURE PARK

Truskavos g. 12, Linkaučiai, Krekenava sub-municipal area +370 687 30 226

Smell the warm home bread, taste the hundred-layer cake, taste and see all the work related to ancient bread baking – Albinas and Audronė invite you to experience this at their family farmhouse in Radviliškės village, where they run the educational Bread Road programme. Here, you can bake your loaf of homemade rye bread – a must-do experience in your lifetime. Adjacent to the bakery is a sculpture park featuring symbols related to the ancient art of baking.

Visits require prior booking.



## PARKS AND GREEN AREAS

### 22. KREKENAVA REGIONAL PARK

Krekenava sub-municipal area +370 604 97 164

One of Panevėžys District's most popular natural oases, Krekenava Regional Park, boasts a vast area dotted with ancient valleys, tributaries, and old Nevežis riverbeds – a priceless treasure of Aukštaitija. Moraine plains, undulating waves, and ridges adorn this landscape, which harbours wetlands, which are vanishing rapidly, and protected plant habitats. The forest is home to Europe's largest herd of European bison and offers peace and tranquillity.

### 23. HYDRANGEA PARK

Kakūnai 9A, Karsakiškis sub-municipal area +370 636 25 892

During the peak of the warm season, when flowers are casting their spell, venture to Kakūnai village in Panevėžys District. Be enchanted by over 3,000 varieties of hydrangeas and the three-trunk oak tree that shelters them.

This park is open to visitors only from mid-July through the summer months.

### 24. PELĖDIŠKIAI PERENNIAL PARK

Pelėdų g. 11A, Pelėdiškiai, Karsakiškis sub-municipal area +370 606 42 328

Over the course of more than a decade, Pelėdiškiai Nursery has blossomed into a true nature oasis, boasting a diverse collection of deciduous, coniferous, and perennial flowers. Additionally, delve into an unexpectedly enriched flora experience with a collection of 800 owl figurines nestled in the greenery!

This park is open to visitors only from mid-July through the summer months.

### 25. THE VALLEY OF ANGELS

Tilto g., Miežiškiai

A magical bench where you can make your wishes known, as eight angels listen attentively. Eight woodworking enthusiasts brought this idea to life and created a valley symbolising peace, faith, and love in the square.

### 26. MOONSTONE PARK

Leonardavas, Krekenava sub-municipal area +370 685 29 653

Solve the dilemma in the open-air museum of modern art created by Panevėžys sculptor Alfridas Pajuodis: a cosmic object or a mystical sculpture? Transformed from Leonardavas Manor, Moonstone Park is home to dozens of authentic, biblically-themed stone sculptures, including one weighing up to 8 tonnes, inspiring the park's name.

## COGNITIVE TRAILS

### 27. SENSORY TRAIL

Dobrovolė II, Krekenava sub-municipal area

Escape the noise and technology to immerse yourself in the tranquillity of nature. This 500-metre sensory trail features 12 rest stops inviting you to listen to the wind, decipher the stories written by winding rivers, listen to the tree sounds, and feel the shimmering patterns of aquatic plants.

### 28. NEVĖŽIS RIVER VALLEY EDUCATIONAL TRAIL

Gringaliai, Krekenava sub-municipal area

Explore over 100 old riverbanks along the Nevėžis River in Krekenava Regional Park! Adjacent to it is the Nevėžis River Valley Nature Trail. It offers a convenient hike for the whole family, with a length of just 1.6 km, and featuring a 6-metre-high observation tower nearby. Don't forget to visit during different seasons to experience the park's authentic transformations.

### 29. EDUCATIONAL AND COGNITIVE TRAIL "GIRINIO TAKAS"

Oreliai, Krekenava sub-municipal area

For enthusiasts of short nature trails, the Girinis Trail invites you on a leisurely 500-metre stroll through the natural forest. Here, you'll find 5 information stations, Girinis House, and a lookout tower offering scenic views of the Linkava River valley and a cliff. Along the way, you might spot deer and mouflons grazing near the forestry.

### 30. THE PATH OF PROVERBS

Švenčiuliškiai, Krekenavos sub-municipal area

Over the centuries, the Lithuanian people have collected a wealth of short but meaningful sayings—proverbs—passed down from generation to generation. These proverbs reflect the wisdom and life experience of the nation. Vivid and expressive, they add flavor to everyday conversations and bring playfulness to language. We invite you to walk this special 1,000-meter trail—not just to count the crows, but to discover the folk wisdom hidden in the ten proverbs found along the path. Read them, remember them, and impress your conversation partners by slipping a proverb or two into your speech!



## ENTERTAINMENT

### 31. ANGER ROOM

Smiltynės vs. 1, Panevėžys sub-municipal area +370 674 48 899

Freedom from accumulated stress, tension, and rage – this is how the philosophy of the Anger Room's space for destructive therapy is described. It gives you the opportunity to release pent-up anger by smashing glass jars, household appliances, and other objects.

Visits require prior booking.

### 32. SIMONAS TENNIS CLUB

Verslo I g. 7, Liūdynė +370 642 62 722

For racket sports enthusiasts – over 1,000 square metres of space housing tennis and paddle courts that meet international standards. They feature surfaces tailored for professional players, modern changing rooms, showers, and a relaxation area.

### 33. FLYING SCHOOL "BIRDMAN". ROJŪNAI AERODROME

Lakūnų g. 7, Liūdynė +370 699 26 489

Enjoy the vicinity of "Steponiai Lake", where you can experience instructed glider flights, a

pilot training school, seminars, festivals, and a convenient opportunity to explore the nearby Rojūnai Manor.

Visits require prior booking.

### 34. SHOOTING RANGE "MEDEINA"

Naujamesčio g. 73, Nociagala, Naujamiestis sub-municipal area +370 652 66 633

Interested in shooting sports? Then you have the opportunity to refine your skills at the only in Panevėžys and its vicinity shooting range "Medeina". All those eager to learn and try their hand at shooting clay pigeons are welcome. After your sporting activities, you can relax in the sauna.

### 35. VAIDAS PAINTBALL AND AIRSOFT

Panevėžys district +370 682 46 722

For an engaging, interesting, and active pastime, there are three paintball and airsoft fields located in different areas of the Panevėžys district. They offer not only active gameplay with all safety measures provided, but also ample seating areas, forests, and meadows for rest.

## ANIMAL FARMS

### 42. ANGORA GOAT FARM

Kiršino g. 1, Mickiemė +370 650 56 091

### 43. BISTRAMPOLIS ANIMAL FARM

Bistrampolio g. 1, Kučiai +370 685 66 151

### 44. JANINA'S SNAIL FARM

Taikos g. 35, Trakiškis +370 646 67 665

### 45. MOLAINIAI STUD FARM

J. Tilkyčio g. 80, Molainiai +370 610 99 880

### 46. NAUSDODĖ STUDS

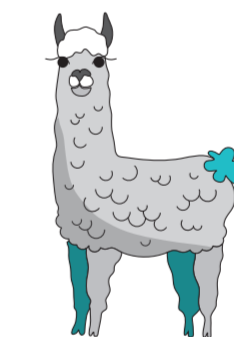
Siaulių g. 27, Nausodė +370 646 23 663

### 47. PANEVĖŽYS ALPACA FARM

Medikonų g. 14, Medikonai +370 682 19 653

### 48. VAIDA'S STUDS

Baltijos kl. 25, Ūta +370 652 07 735



## WELCOME TO PANEVĖŽYS DISTRICT!

Rediscover the joy of exploration as you walk through forest trails revealing some of the most stunning horizons or unexpectedly come across a manor surrounded by blooming flower beds down an unfamiliar path. Panevėžys District is full of breathtaking locations, so it's worth taking this map with you. From hidden educational trails in Krekenava Regional Park, a historical bunker turned into a horror room, to the chance to see a 70–80-million-year-old dinosaur egg and thousands of porcelain art pieces. Travel through time, explore history, experience Aukštaitija, and become a true connoisseur!

Panevėžys

**NOW**

TOURISM INFORMATION  
www.panevezysnow.lt  
tic@panevezysnow.lt  
+370 615 40 973  
Respublikos g. 40

PanevezysNOW ir Ka veikti Panevėžio mieste ir rajone?

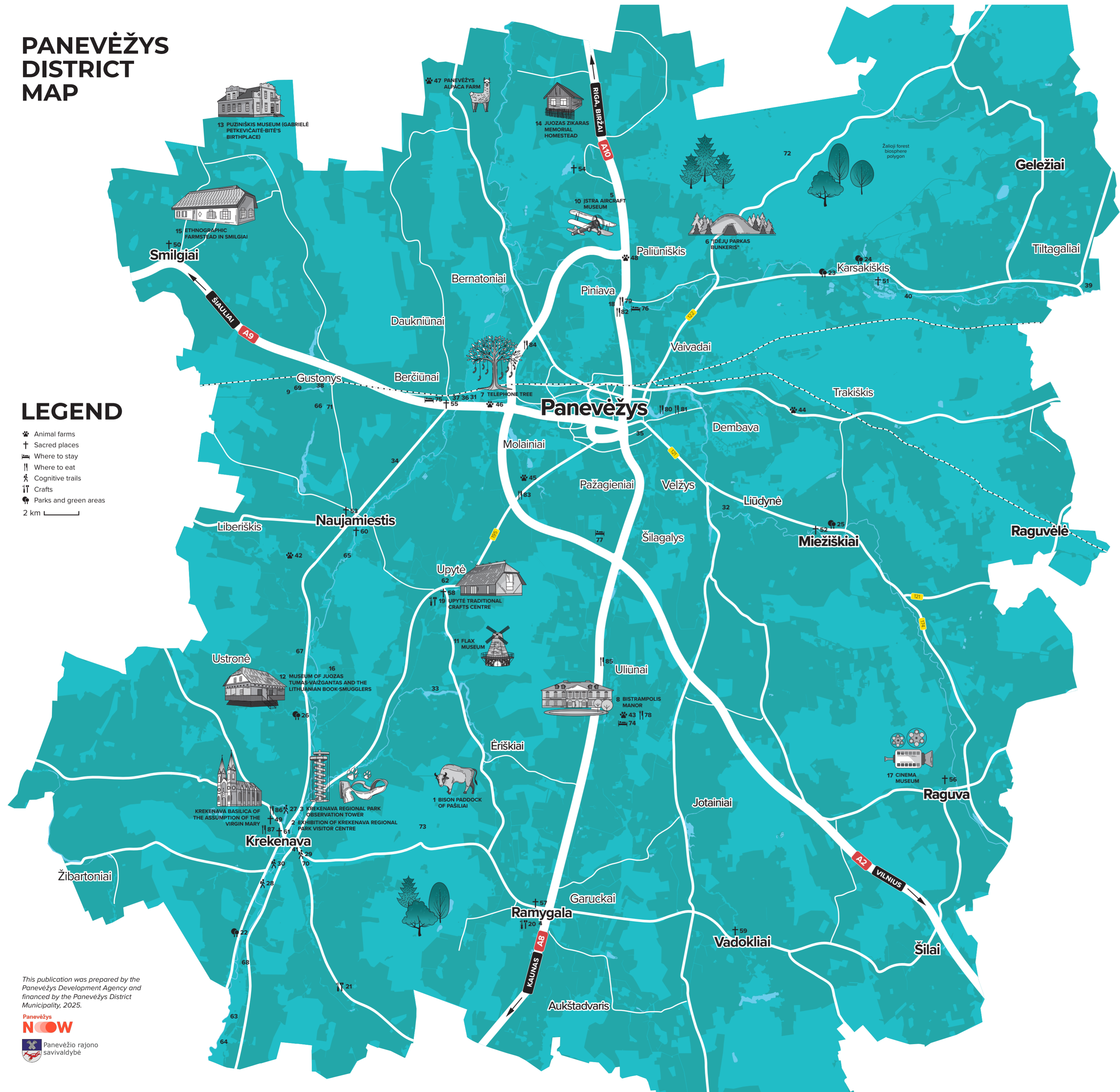
panevezysnow



# PANEVĖŽYS DISTRICT MAP

## LEGEND

- Animal farms
  - Sacred places
  - Where to stay
  - Where to eat
  - Cognitive trails
  - Crafts
  - Parks and green areas
- 2 km



## SACRED PLACES

49. COMPLEX OF BUILDINGS OF THE CHURCH OF THE ASSUMPTION OF THE BLESSED VIRGIN MARY IN KREKENAVA  
*Bažnyčios g. 19, Krekenava*
50. COMPLEX OF BUILDINGS OF THE CHURCH OF SAINT GEORGE IN SMILGIAI  
*Panevėžio g. 18A, Smilgiai*
51. KARSAKIŠKIS CHURCH OF THE CRUCIFIED JESUS  
*Levens g. 24A, Karsakiškis*
52. CHURCH OF THE BLESSED VIRGIN MARY IN MIEŽIŠKIAI  
*Nevežio g. 17, Miežiškiai*
53. NAUJAMIESTIS ST. APOSTLE EVANGELIST MATTHEW CHURCH  
*J. Basanavičiaus g. 12, Naujamiestis*
54. CHURCH OF THE NATIVITY OF THE VIRGIN MARY IN PAJSTRIS  
*Gegužinės g. 38, Pajstrys*
55. CHURCH OF THE LITHUANIAN MARTYRS IN BERČIŪNAI  
*Kurorto g. 2, Berčiūnai*
56. RAGUVA CHURCH OF THE ASSUMPTION OF THE MOST BLESSED VIRGIN MARY  
*Laisvės g. 28, Raguva*
57. RAMYGALA CHURCH OF ST. JOHN THE BAPTIST  
*Bažnyčios g. 6, Ramygala*
58. ST. CHARLES BORROMEIO CHURCH IN UPYTĖ  
*Nepriklausomybės a. 2A, Upytė*
59. CHURCH OF THE SACRED HEART OF JESUS IN VADOKLIAI  
*Tulpių g. 1, Vadokliai*
60. KALNELIS KARAIM CEMETERY  
*Kalnėlis, Naujamiestis sub-municipal area*
61. ŠVENČIULIŠKIAI VILLAGE CEMETERY  
*Švenčiuliškiai, Krekenava sub-municipal area*

## NATURAL SITES

62. UPYTĖ MOUND (ČIČINSKAS HILL)  
*Tarnagala, Upytė sub-municipal area*
63. BURVELIAI SACRED HILL  
*Burveliai, Krekenava sub-municipal area*
64. RUINS OF KAZOKAI VILLAGE BRIDGE AND VIEWING PLATFORM  
*Kazokai, Krekenava sub-municipal area*
65. KALNELIS MULTI-STEMMED PINE TREE  
*Kalnėlis, Naujamiestis sub-municipal area*
66. BUČIAI OAK  
*Bučiai, Naujamiestis sub-municipal area*
67. SVIRNUPIS WHITE ELM  
*Vadaktėliai, Naujamiestis sub-municipal area*
68. DANILIŠKIS LINDEN ALLEY  
*Daniliškis, Krekenava sub-municipal area*
69. PAŽIBAI LINDEN TREE ALLEY  
*Pažibai, Naujamiestis sub-municipal area*
70. STONE "RAPOLAS"  
*Krekenava sub-municipal area*
71. NAURADAI STONE  
*Smilgiai sub-municipal area*
72. ŽALIOJI FOREST  
*Karsakiškis sub-municipal area*
73. PARTISAN UNDERGROUND BARRACKS  
*Pašiliai forest, Krekenava sub-municipal area*

## WHERE TO STAY?

### HOTELS:

74. BISTRAMPOLIS MANOR \*\*\*  
*Bistrampolio g. 1, Kučiai*
75. GREEN SMILTYNĖ HOTEL \*\*\*  
*Smiltynės vs. Nr. 7 Panevėžys sub-municipal area*
76. PAS KATINĄ \*\*  
*Smėlynės g. 222, Tičkūnai*
77. VIA BALTICA PANEVĖŽYS  
*Panevėžio aplinkkelis. 5, Šilagalys*



## WHERE TO EAT?

### RESTAURANTS:

78. BISTRAMPOLIS MANOR  
*Bistrampolio g. 1, Kučiai*
79. „CORDO.22“  
*Pamarliškių g. 22, Piniava*
- CAFÉS:
80. „GANDRALIZDIS“  
*Jūros g. 20, Dembava*
81. „GĖLIŲ 2“  
*Gėlių g. 2, Dembava*
82. „PAS KATINĄ“  
*Smėlynės g. 222, Tičkūnai*
83. „KARČEMA RUŽAVA“  
*J. Tilvyčio g. 171, Molainiai*
84. „DAINUVA“  
*Panevėžio aplinkkelis 101, Bernatoniai*
85. „PRIE ŽIDINIO“  
*Gėlių g. 14, Uliūnai*
86. „LAIMĖ KARTU“  
*Bažnyčios g. 1, Krekenava*
87. "29-AS KILOMETRAS"  
*Laisvės g. 4, Krekenava*

## USEFUL LINKS

- EV.LAKD.LT  
*Electric vehicle charging stations*
- PANEVEZIOAUTOBUSAI.LT  
*Suburban and intercity buses*
- BILIETAS.LTGLINK.LT  
*Train information*
- PANEVEZYSNOW.LT  
*Tourist information*
- RENGINIAI.PANEVEZYSNOW.LT  
*Event platform*



This publication was prepared by the Panevėžys Development Agency and financed by the Panevėžys District Municipality, 2025.

Panevėžys  
**NOW**

Panevėžio rajono savivaldybė